



FIRE DAMAGE RESTORATION

The unique behavior of smoke creates a complexity among property loss and destruction. The fire damage professionals at Valcon Contracting Corp. will survey the loss site to determine the extent of damage from fire, smoke, heat and moisture.

****Always remember that immediate action is very important to minimize the health and safety hazards and reduce the amount of fire related damages to your property.**

Facts about Smoke:

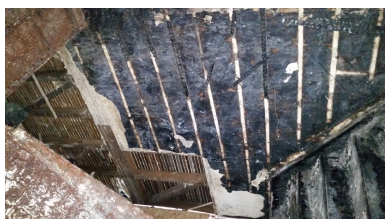
- Hot smoke migrates to cooler area and upper levels of a structure
- Smoke moves through holes around pipes in plumbing systems to travel from floor to floor and can get trapped in surfaces with pores (wood, carpet, furniture, walls, plastic and ceramics)
- The type of smoke may greatly affect the fire damage restoration process

Types of Smoke Damage:

Once at a fire scene, Valcon professionals will test the soot to determine which type of smoke damage occurred. A cleaning procedure will be established based on the fire damage pretesting.

Pretesting includes:

- Determining the full extent of smoke and fire damage such as how many materials were affected by smoke or fire, proper method for cleaning, relocation of personal belongings, etc.
- Protecting areas that were not affected to prevent the spread of damage
- Deciding which materials can be restored, and which need to be replaced



Types of Soot

- Wet smoke residues result from smoldering fire with low heat. This residue is sticky and smeary with pungent odors
- Dry smoke residues result from fast burning fires at high temperatures. This residue is often dry, powdery, small and non-smeary.
- Protein residues are virtually invisible residues that cause discoloration to paints and varnishes
- Fuel oil soot is caused by furnace puff backs which distribute fuel oil soot

**CALL OUR 24/7 EMERGENCY LINE
(718) 652-0190**

